

MAP 105 V04- VEGE TOWER ENTRANCE



1. Enter the next room
2. Swing across the bars to get to the other side



3. Fight the enemies
4. Around the last corner from the platform you are on, you will notice a switch on the wall



5. Wallrun to the rope then continue wallrunning to get to the balcony on the other side
6. Attack the enemies that stand in your way



- 7. Vertical wallrun onto the pressure switch
- 8. This will cause a block of wall to extrude from the platform you were just previously on



- 9. Wallrun back to the center platform where the wall extruded
- 10. Climb on top of the extruded wall



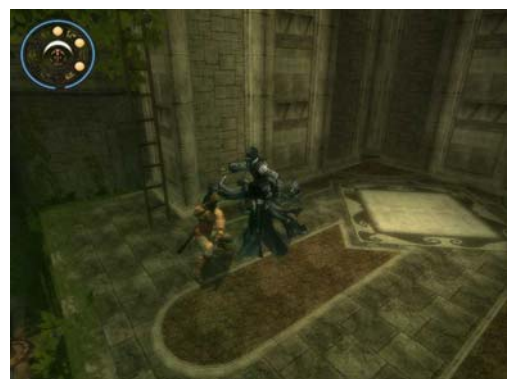
- 11. Vertical wallrun up the wall and jump off of it
- 12. You will grab hold of the bar above



- 13. Shimmy around the 90 degree bend**
- 14. Jump to the ledge against the wall**



- 15. Work your way going right, by jumping from one ledge to the other**
- 16. You will get to the platform where there is a ladder going down. Go down the ladder**



- 17. At the bottom of the ladder, jump to the platform which is back in the other direction**
- 18. Climb down the ladder and kill the enemy**



19. Climb down the next ladder

20. At the ground floor, to through the exit you are next to



21. Follow the path

22. When you reach a wooden barrier, just wallrun up it to grab the ledge, then climb up to the next level



23. You will encounter spinblades, just roll under them and kill the enemies on the other side

24. You are now entering 55-6